



LOPI WOOD STOVES



PATRIOT



ANSWER



PARLOR



ENDEAVOR



LIBERTY

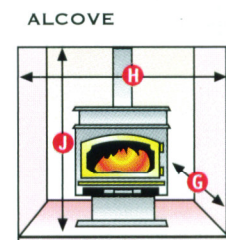
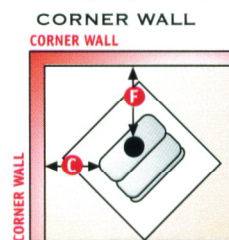
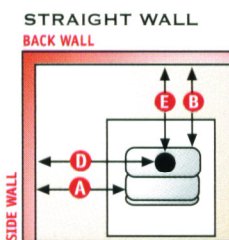
	SMALL		MEDIUM		LARGE	
SPECIFICATIONS						
WIDTH	23 5/8"	23 5/8"	24"	24"	30"	30"
HEIGHT (ALL LEGS)	26 1/2"	27 7/8"	30 3/4"	30 5/8"	32 1/4"	32 1/4"
HEIGHT (PEDESTAL)	N/A	31 7/8"	34 3/4"	34 5/8"	36 1/4"	36 1/4"
DEPTH	14 5/8"	16 1/4"	15"	23 1/2"	21"	21"
FLUE SIZE	6"	6"	6"	6"	6"	6"
CONSTRUCTION (PLATE STEEL)	1/4"-3/16"	1/4" TO 3/16"	1/4" TO 3/16"	5/16" TO 3/16"	5/16" TO 3/16"	5/16" TO 3/16"
WEIGHT (BODY W/LEGS)	270 LBS	300 LBS.	325 LBS.	448 LBS.	490 LBS.	490 LBS.
PERFORMANCE						
EMISSIONS	4.4 GRAMS/HR.	4.4 GRAMS/HR.	4.4 GRAMS/HR.	1.9 GRAMS/HR.	2.6 GRAMS/HR.	2.6 GRAMS/HR.
HEATING CAP. (50 FT.)	600 TO 1,200	750 TO 1,400	600 TO 1,200	1,200 TO 2,000	1,500 TO 2,500	1,500 TO 2,500
HEAT OUTPUT	66,800 BTU'S/HR.	66,800 BTU'S/HR.	66,800 BTU'S/HR.	72,400 BTU'S/HR.	74,300 BTU'S/HR.	74,300 BTU'S/HR.
EFFICIENCY (DEQ)	70%	70%	70%	70.4%	70%	70%
MAXIMUM BURN TIME	8 HOURS	8 HOURS	8 HOURS	10 HOURS	12 HOURS	12 HOURS
FIREBOX SIZE	1.6 CUBIC FT.	1.6 CUBIC FT.	1.6 CUBIC FT.	2.2 CUBIC FT.	3.1 CUBIC FT.	3.1 CUBIC FT.
MAXIMUM LOG SIZE	18"	18"	18"	18"	24"	24"
CLEARANCES						
	SINGLE WALL CONNECTOR	DOUBLE WALL CONNECTOR	SINGLE WALL CONNECTOR	DOUBLE WALL CONNECTOR	SINGLE WALL CONNECTOR	DOUBLE WALL CONNECTOR
A= STOVE TO SIDE WALL	18"	18"	18"	13"	18"	18"
B= STOVE TO BACK WALL	18"	10 1/2"	16 1/2"	9"	18"	10 1/2"
C= STOVE TO CORNER WALL	10"	10"	10"	7 1/2"	9 3/4"	9 3/4"
D= CONNECTOR TO SIDE WALL	27"	26 1/2"	27"	21 1/2"	27"	26 1/2"
E= CONNECTOR TO BACK WALL	19 1/4"	11 1/4"	19 1/2"	11 1/2"	19 1/4"	11 1/4"
F= CONNECTOR TO CORNER WALL	17 3/4"	17 1/4"	19 1/2"	16 1/2"	17 3/4"	17 1/4"
ALCOVE						
G= MAXIMUM DEPTH	48"	48"	48"	48"	48"	48"
H= MINIMUM WIDTH	59 5/8"	49 5/8"	49 5/8"	49 5/8"	54"	62"
J= MINIMUM HEIGHT	84"	84"	84"	84"	84"	84"

CLEARANCES TO UNPROTECTED COMBUSTIBLES

USE THESE ILLUSTRATIONS IN CONJUNCTION WITH THE INFORMATION UNDER THE "CLEARANCE" & "ALCOVE" HEADINGS ABOVE.

ALL WOODSTOVES MUST HAVE A NONCOMBUSTIBLE HEARTH PAD THAT EXTENDS A MINIMUM OF 16" IN FRONT OF THE LOPI STOVE AND 6" TO THE SIDES AND BACK.

INSTALLATIONS



*HEATING CAPACITY MAY VARY DEPENDING ON DEGREE OF HOME INSULATION, FLOOR PLAN AND AMBIENT TEMPERATURE ZONE OF THE AREA IN WHICH YOU LIVE.